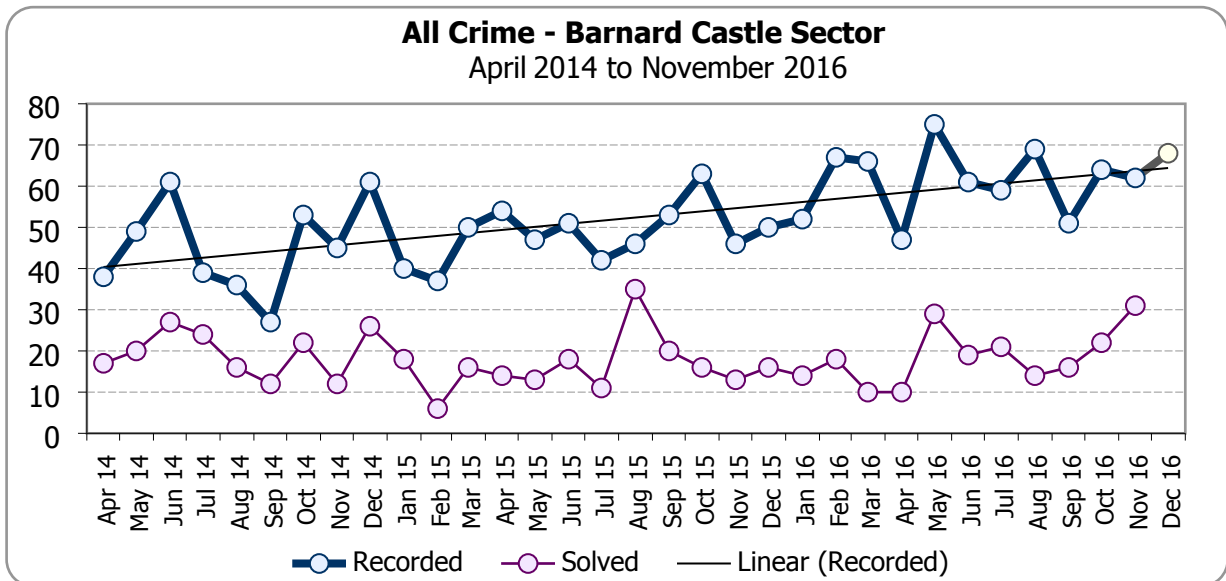
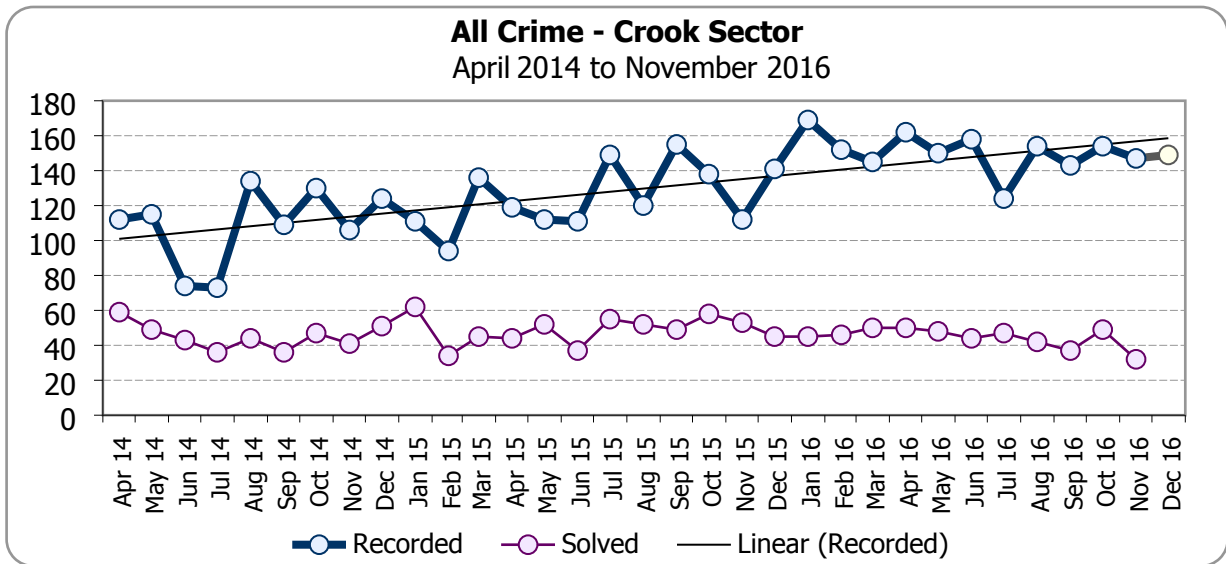
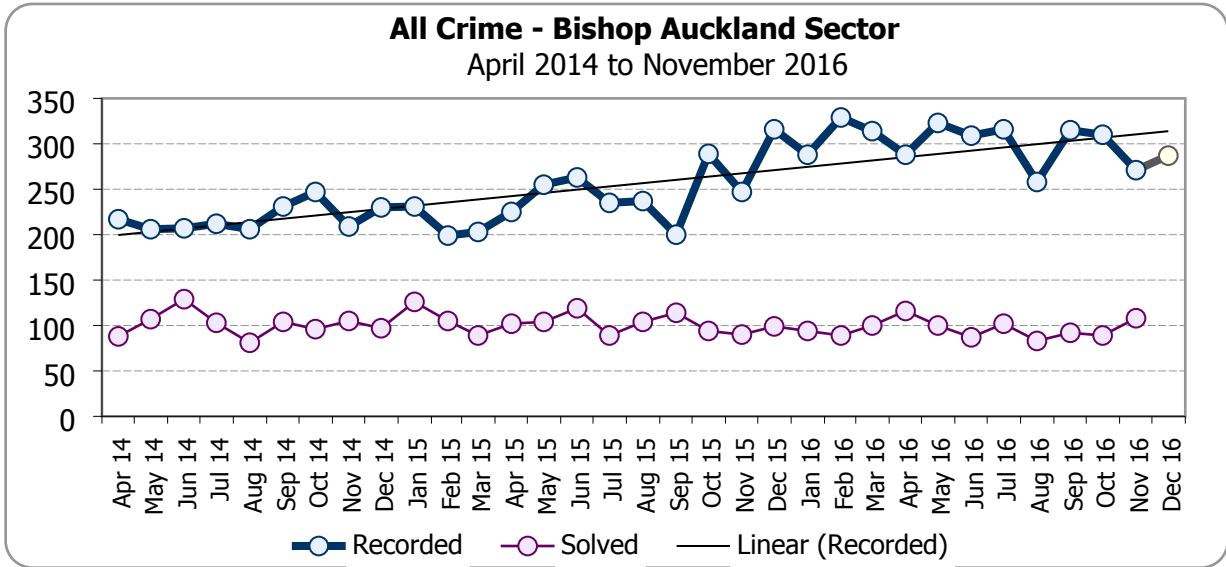
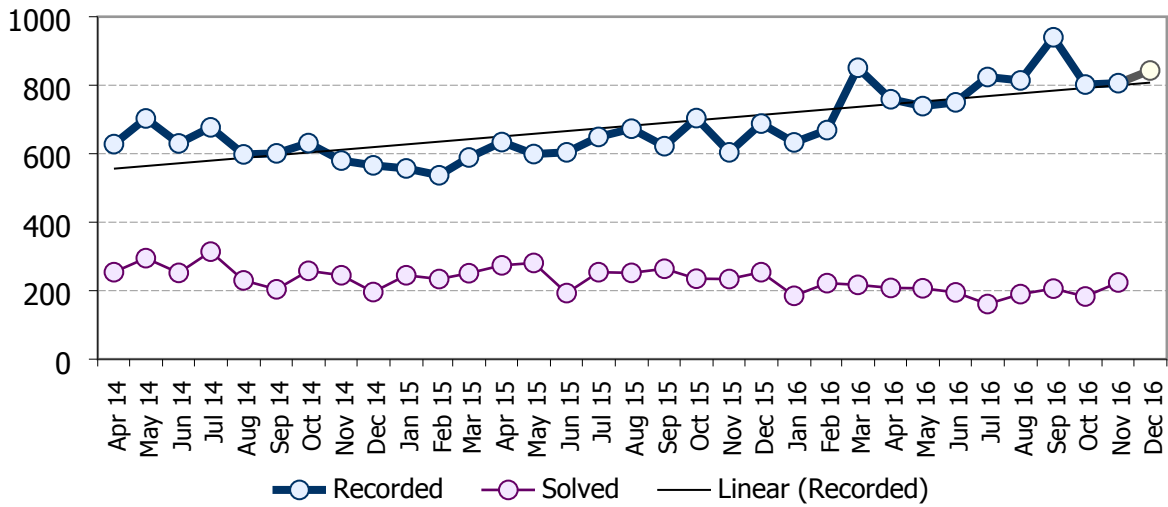


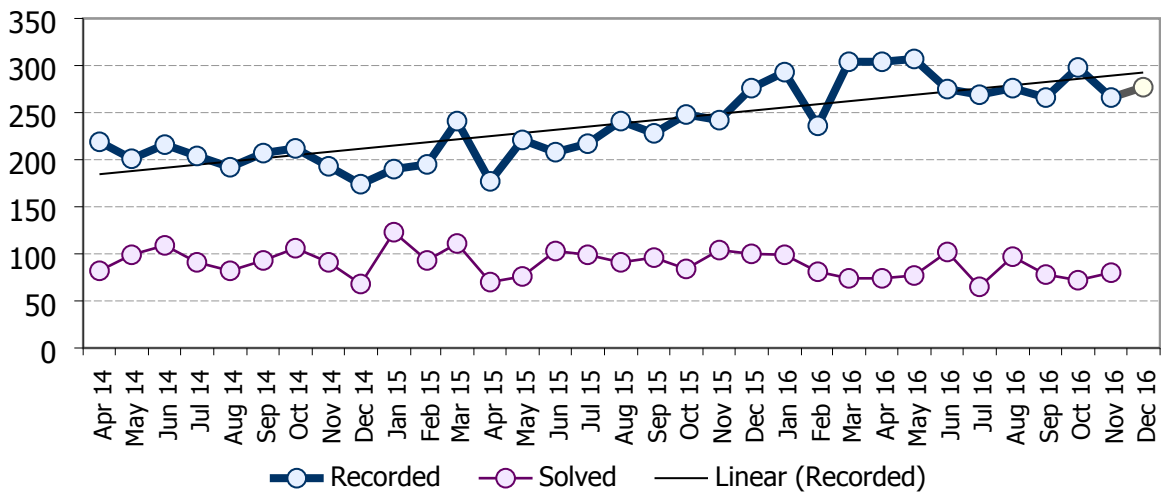
All Crime



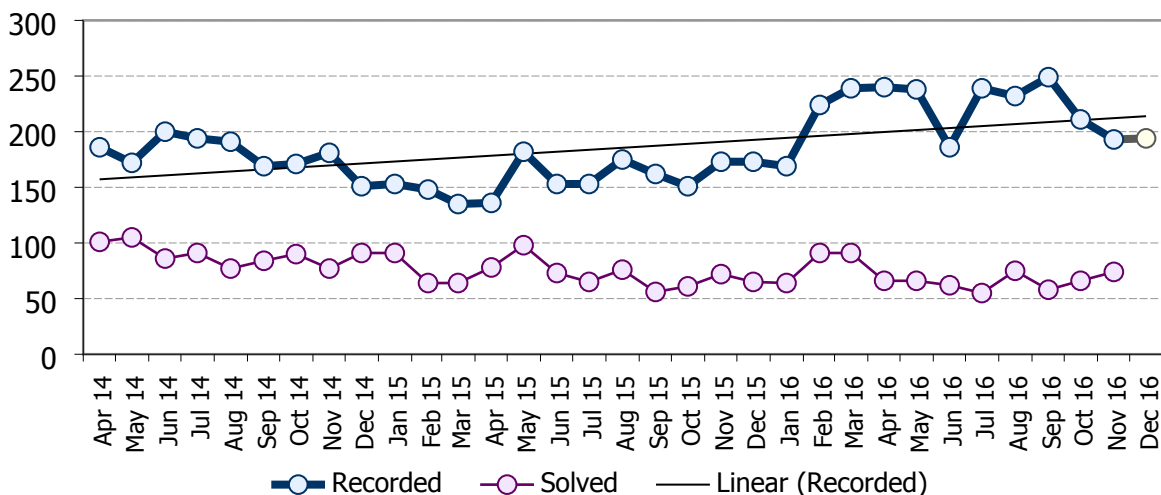
All Crime - Darlington Sector April 2014 to November 2016



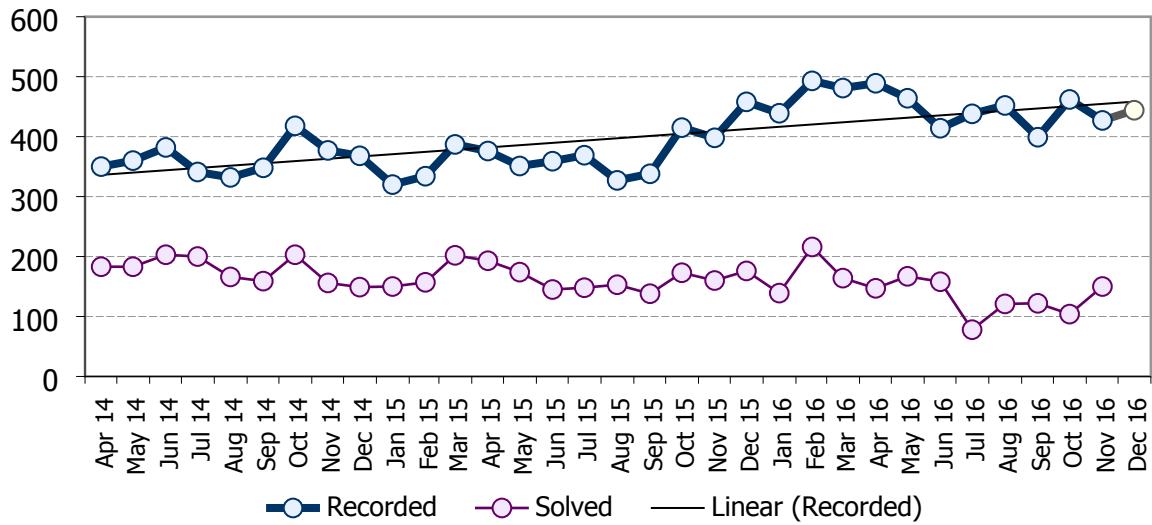
All Crime - Newton Aycliffe Sector April 2014 to November 2016



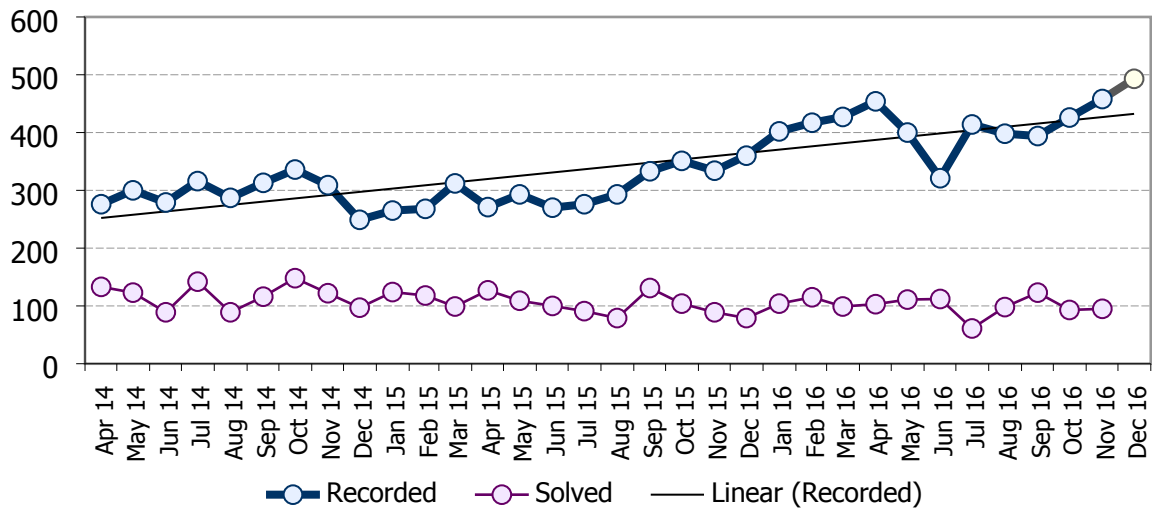
All Crime - Spennymoor Sector April 2014 to November 2016



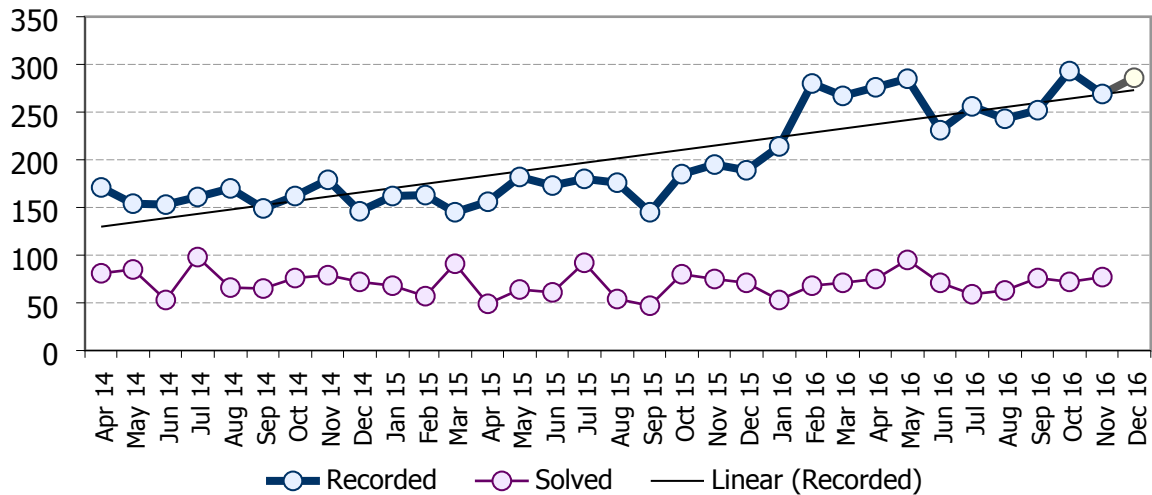
All Crime - Durham Sector
April 2014 to November 2016



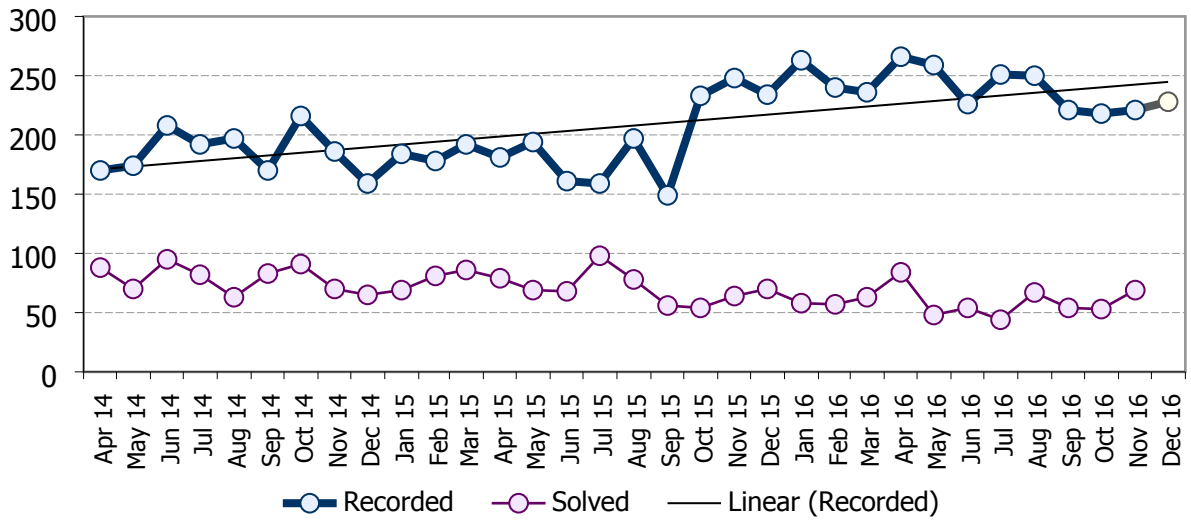
All Crime - Peterlee Sector
April 2014 to November 2016



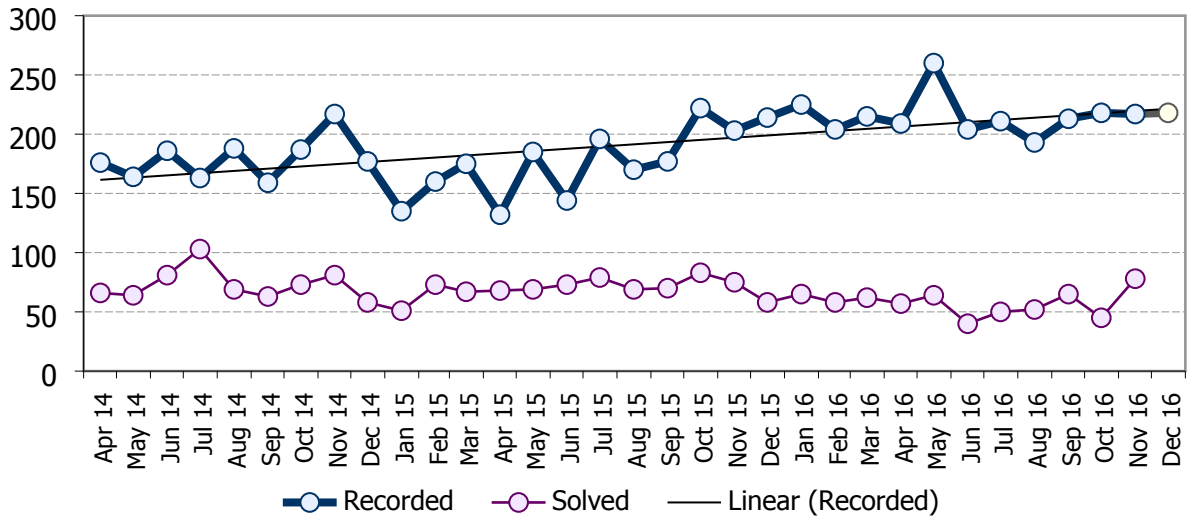
All Crime - Seaham Sector
April 2014 to November 2016



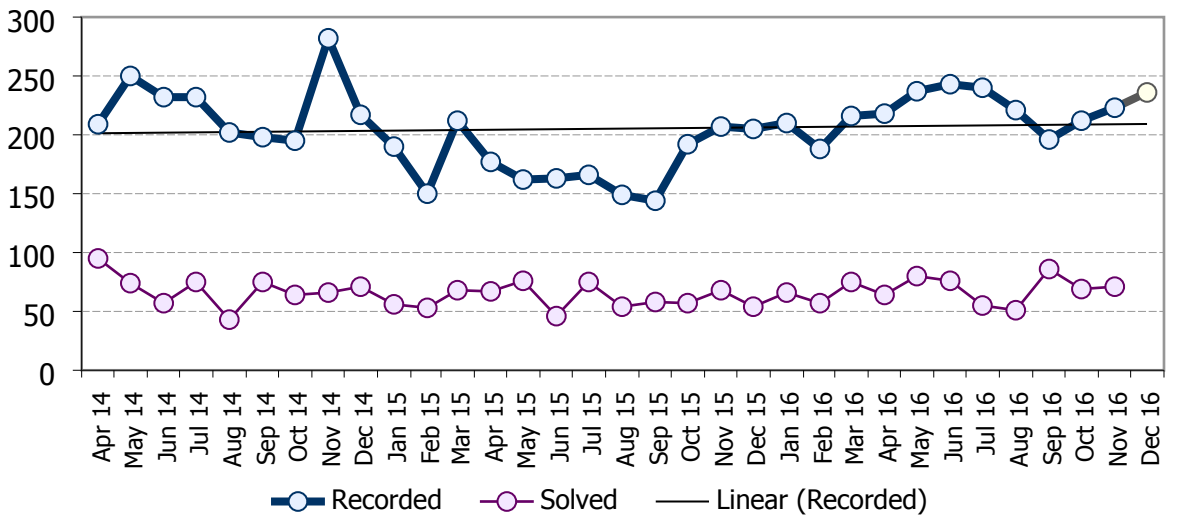
All Crime - Chester-le-Street Sector
April 2014 to November 2016



All Crime - Stanley Sector
April 2014 to November 2016

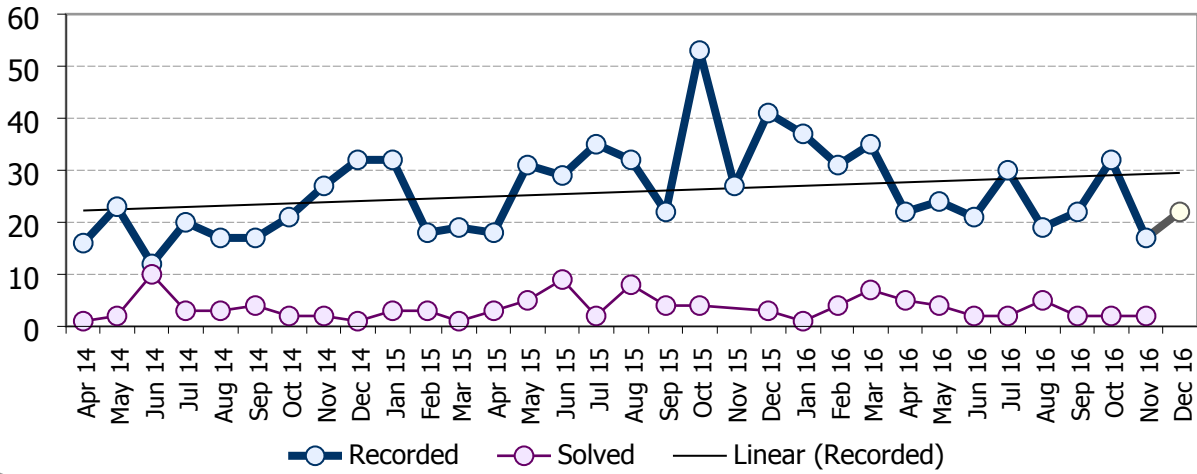


All Crime - Consett Sector
April 2014 to November 2016

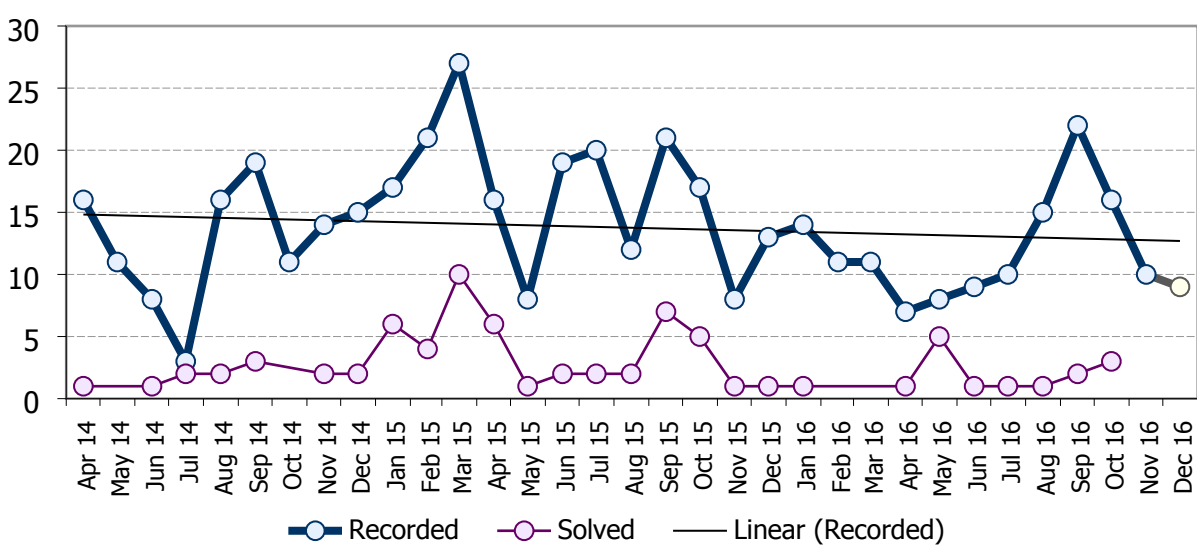


Burglary

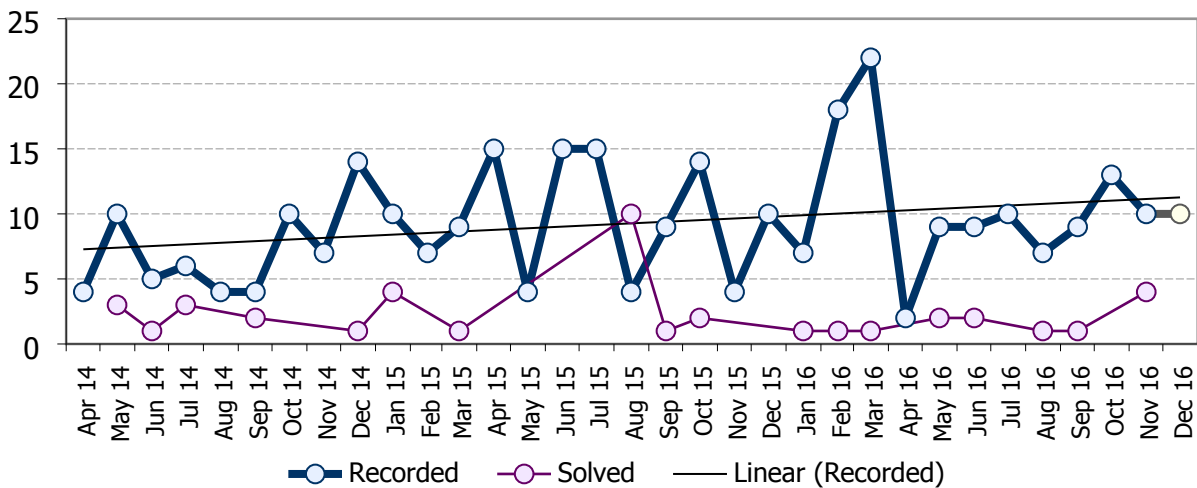
Burglary - Bishop Auckland Sector
April 2014 to November 2016



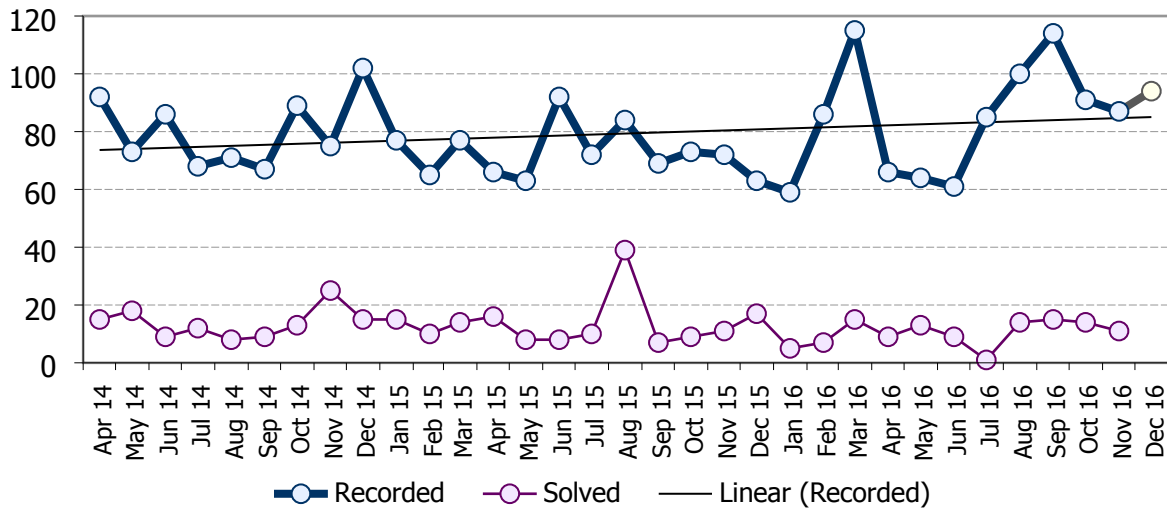
Burglary - Crook Sector
April 2014 to November 2016



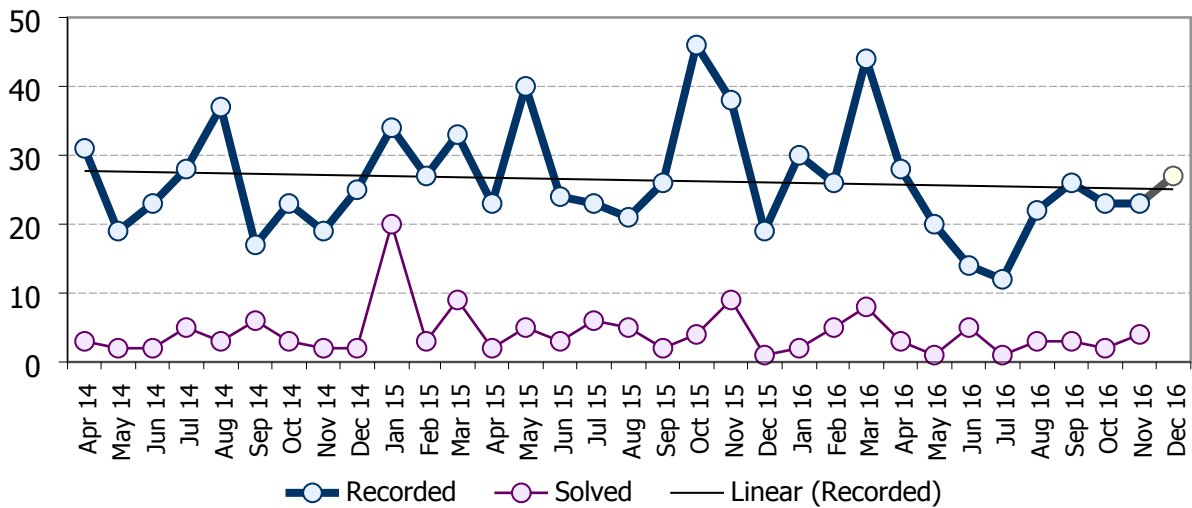
Burglary - Barnard Castle Sector
April 2014 to November 2016



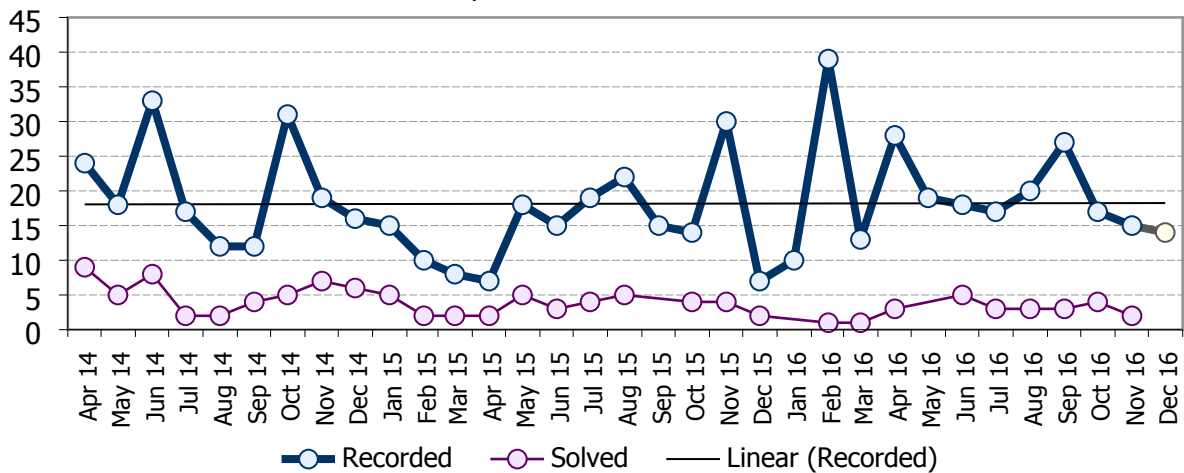
Burglary - Darlington Sector
April 2014 to November 2016



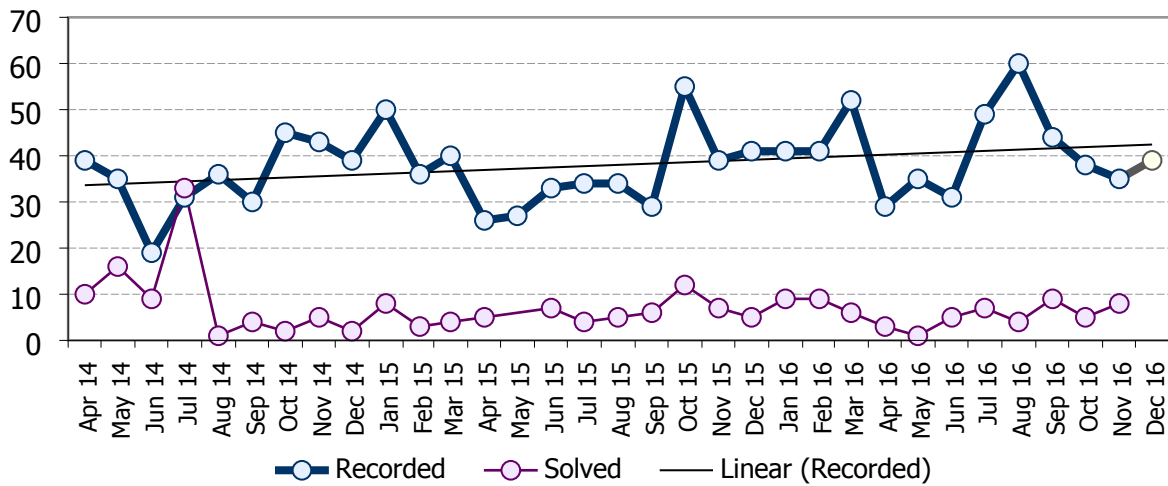
Burglary - Newton Aycliffe Sector
April 2014 to November 2016



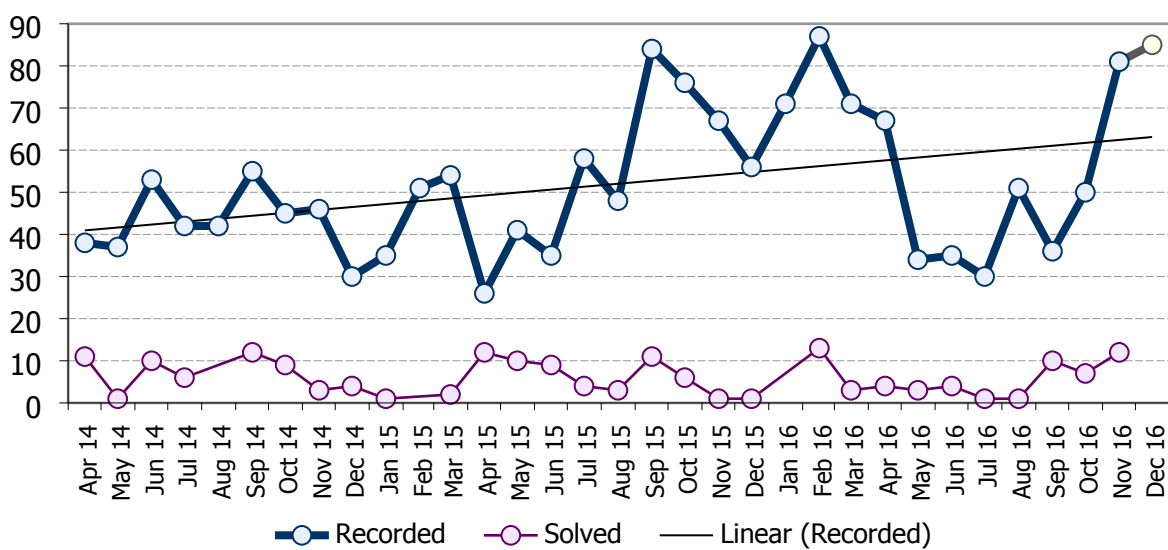
Burglary - Spennymoor Sector
April 2014 to November 2016



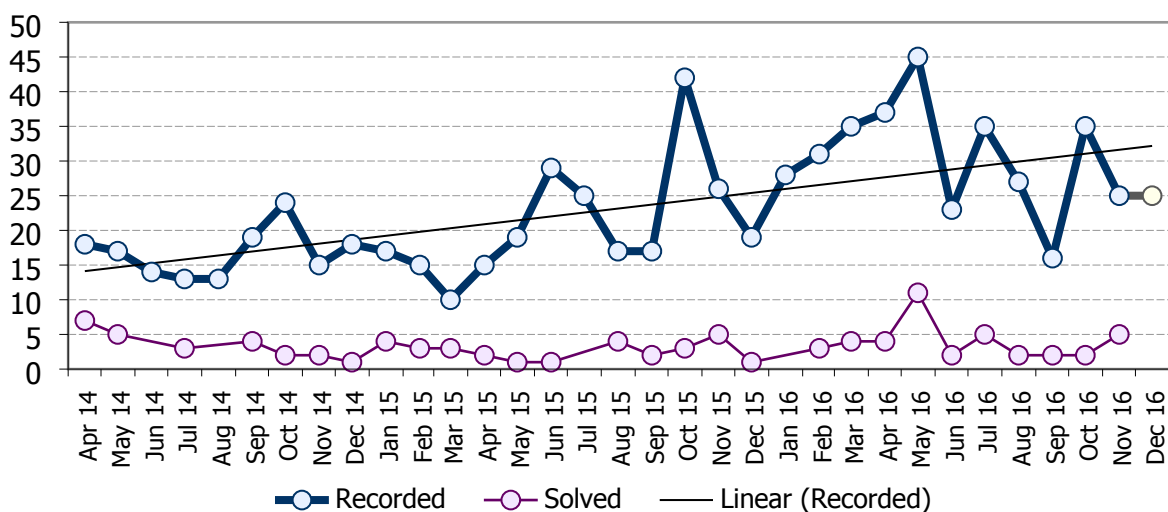
Burglary - Durham Sector
April 2014 to November 2016



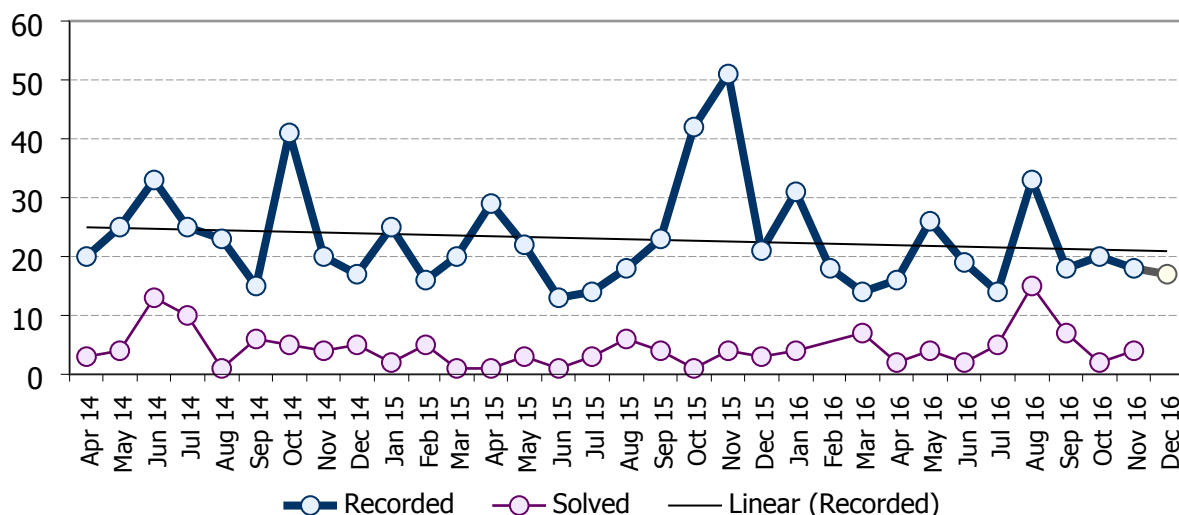
Burglary - Peterlee Sector
April 2014 to November 2016



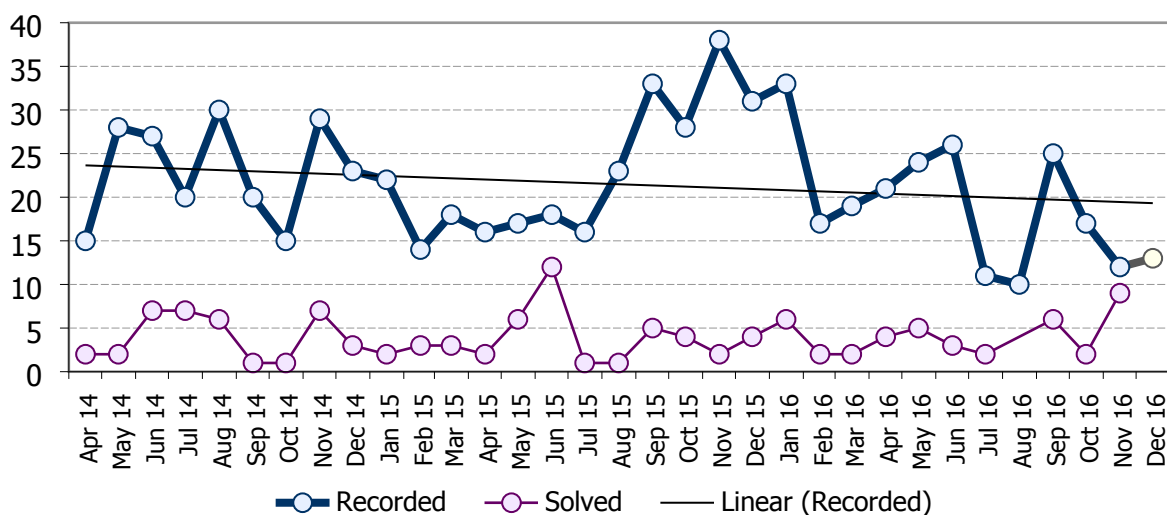
Burglary - Seaham Sector
April 2014 to November 2016



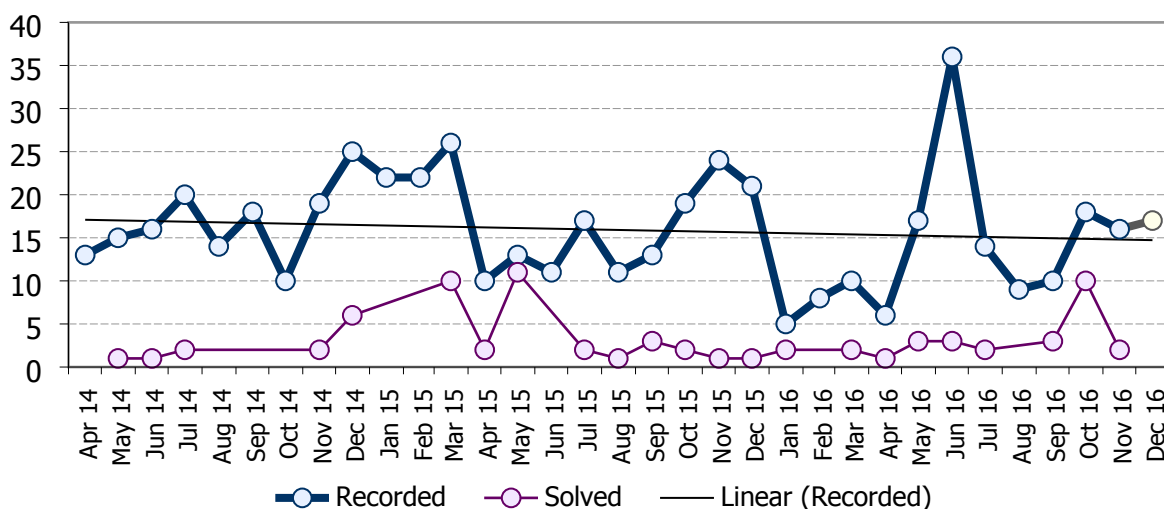
Burglary - Chester-le-Street Sector April 2014 to November 2016



Burglary - Stanley Sector April 2014 to November 2016

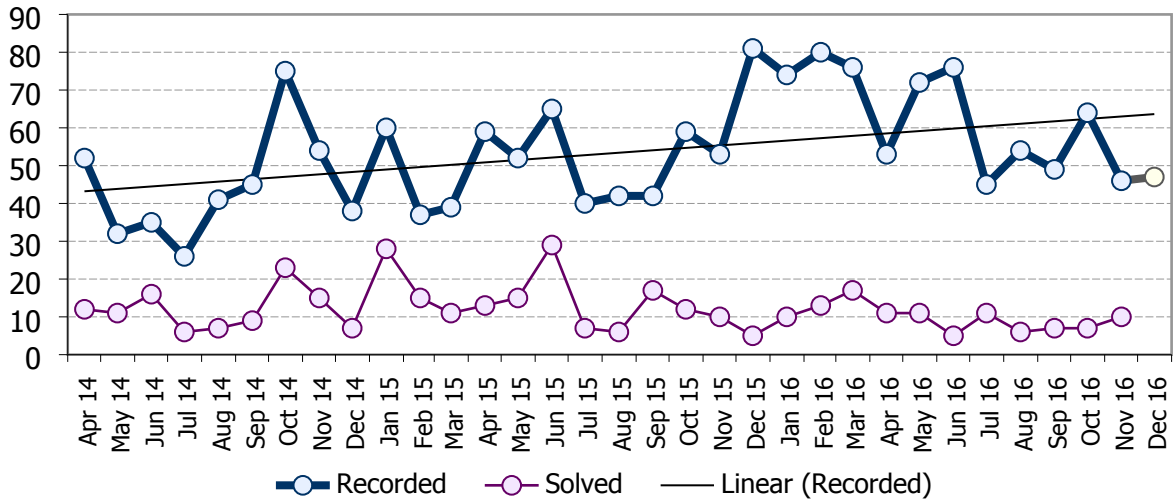


Burglary - Consett Sector April 2014 to November 2016

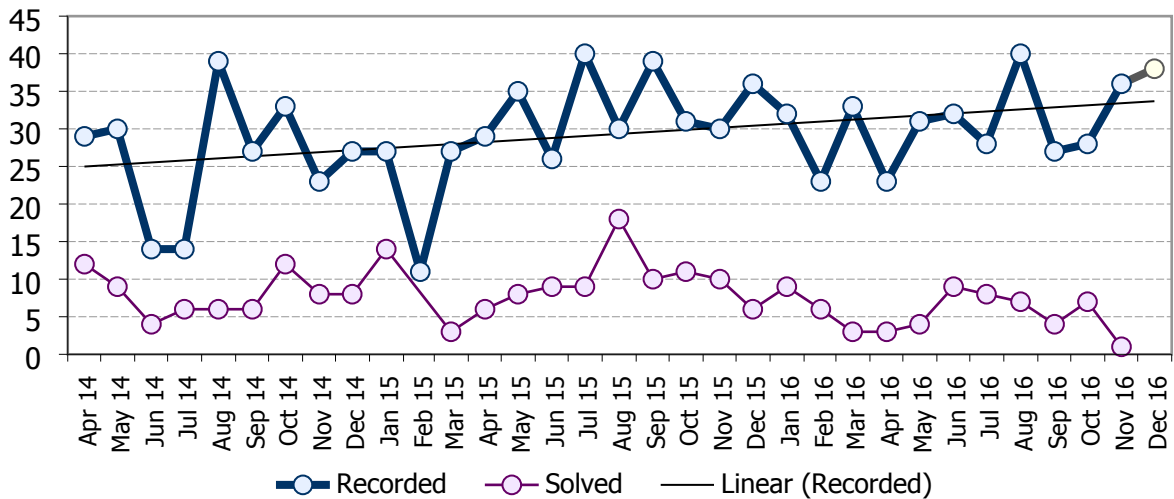


Criminal Damage and Arson

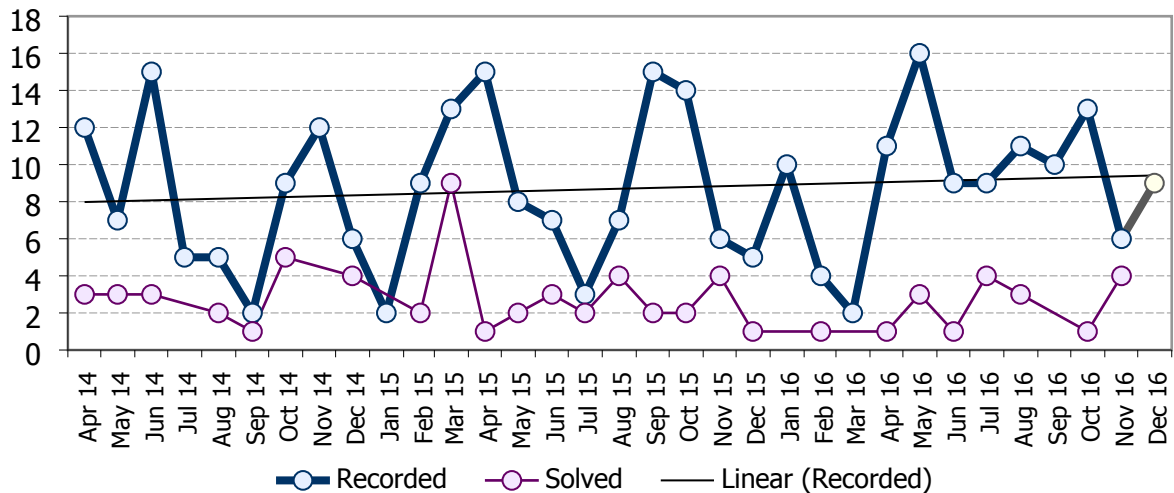
Criminal Damage and Arson - Bishop Auckland Sector
April 2014 to November 2016



Criminal Damage and Arson - Crook Sector
April 2014 to November 2016

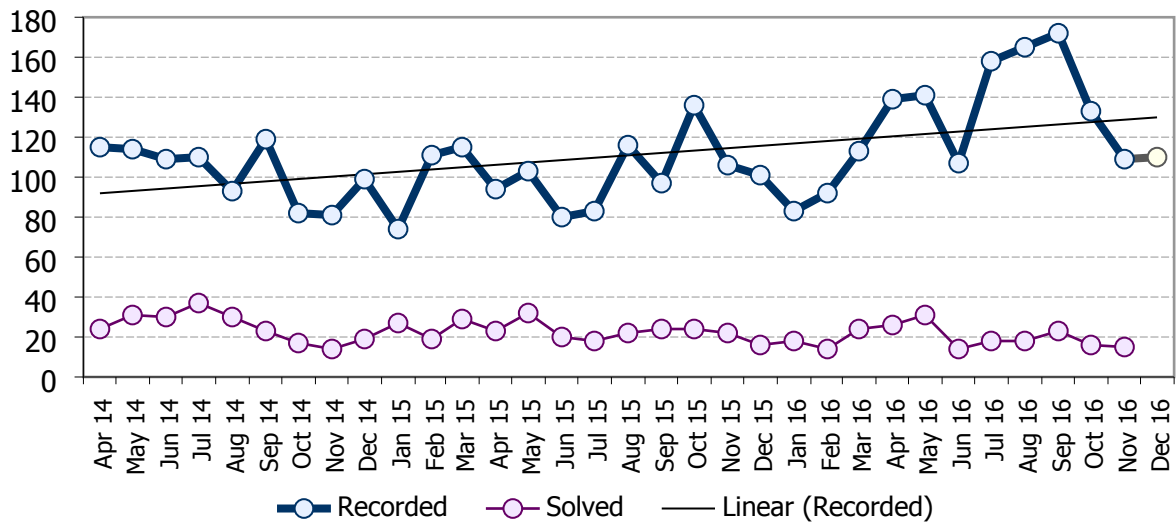


Criminal Damage and Arson - Barnard Castle Sector
April 2014 to November 2016



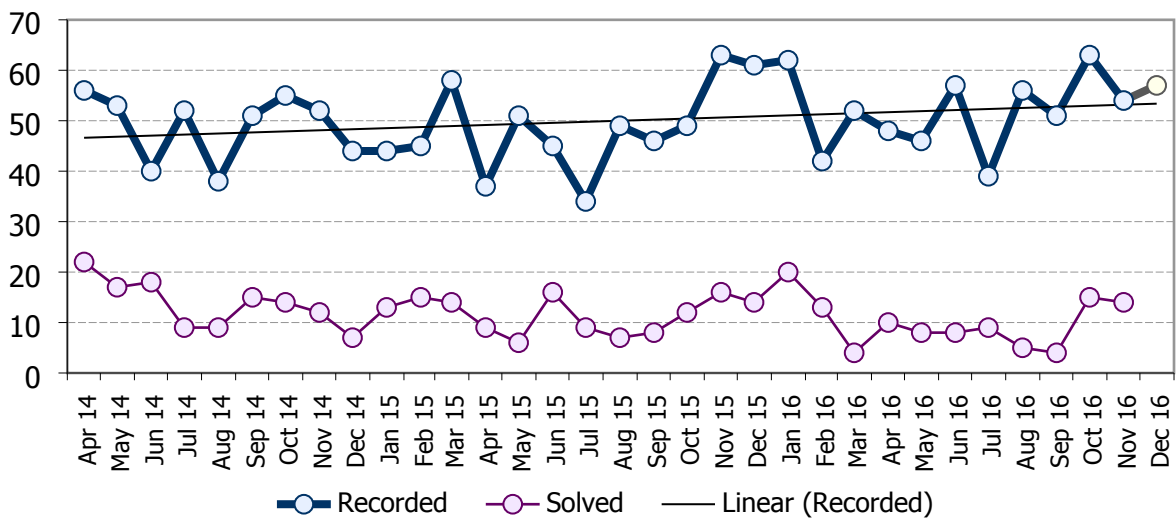
Criminal Damage and Arson - Darlington Sector

April 2014 to November 2016



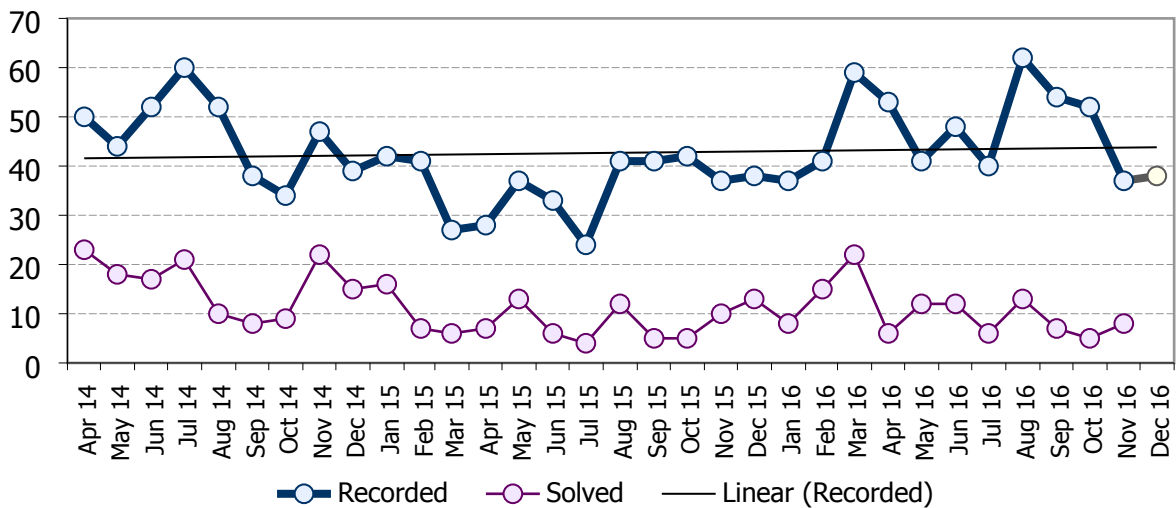
Criminal Damage and Arson - Newton Aycliffe Sector

April 2014 to November 2016



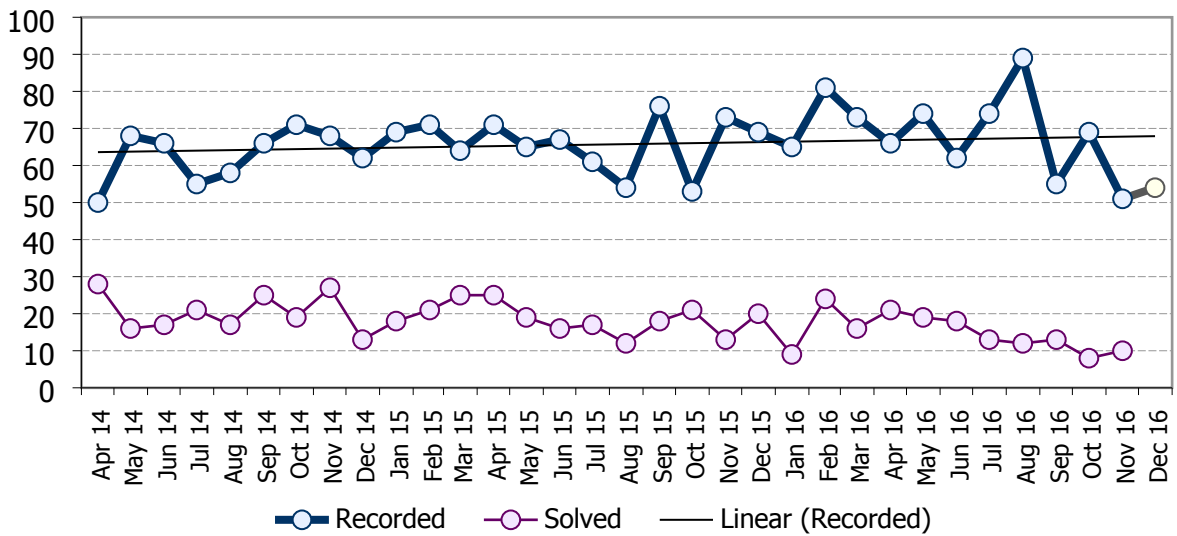
Criminal Damage and Arson - Spennymoor Sector

April 2014 to November 2016



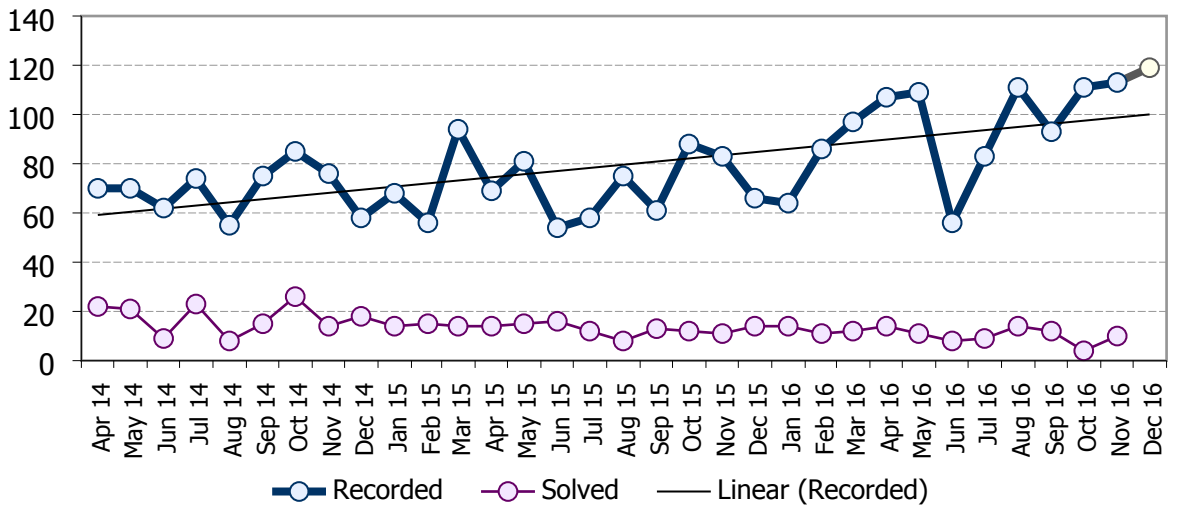
Criminal Damage and Arson - Durham Sector

April 2014 to November 2016



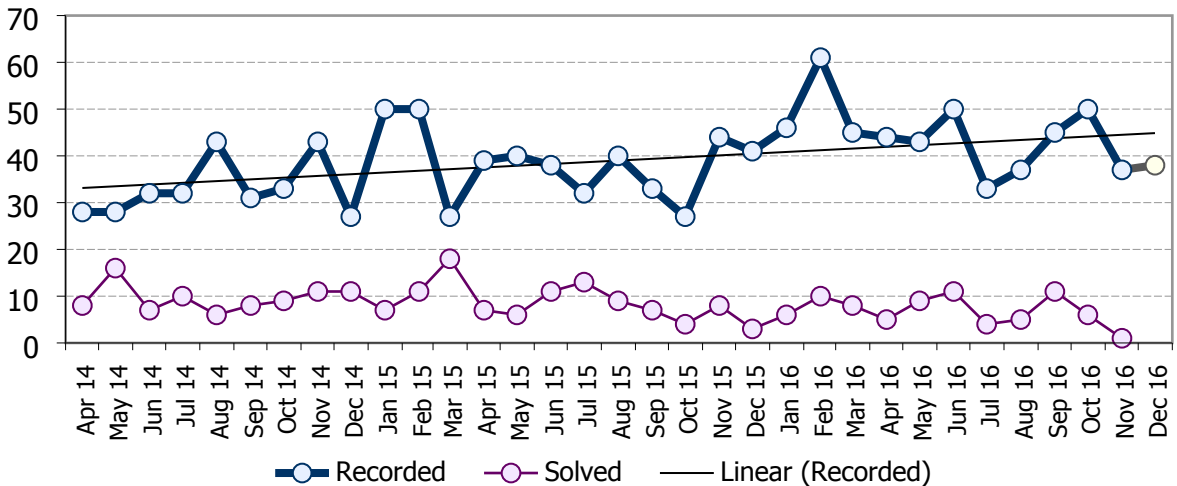
Criminal Damage and Arson - Peterlee Sector

April 2014 to November 2016

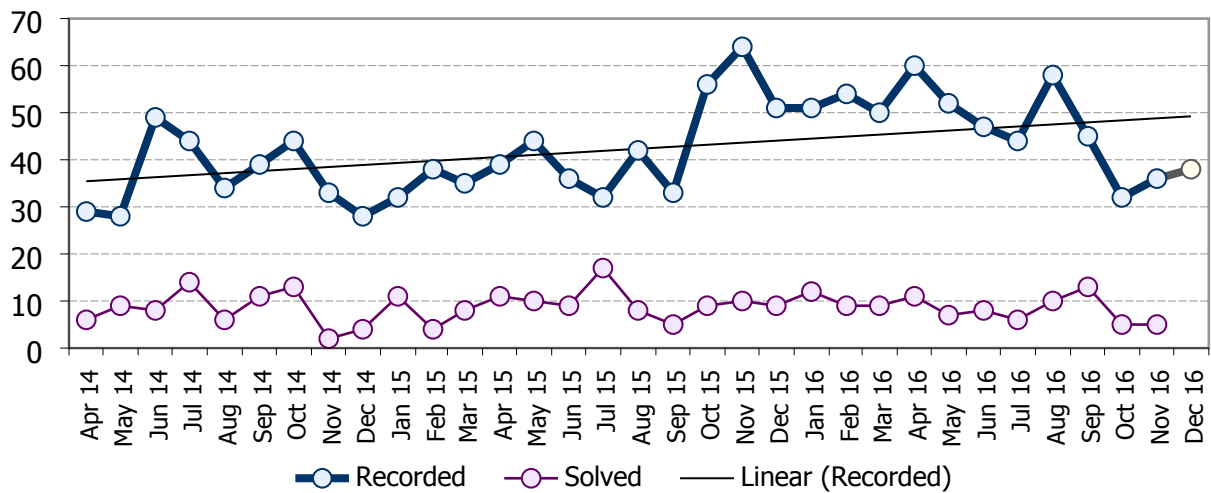


Criminal Damage and Arson - Seaham Sector

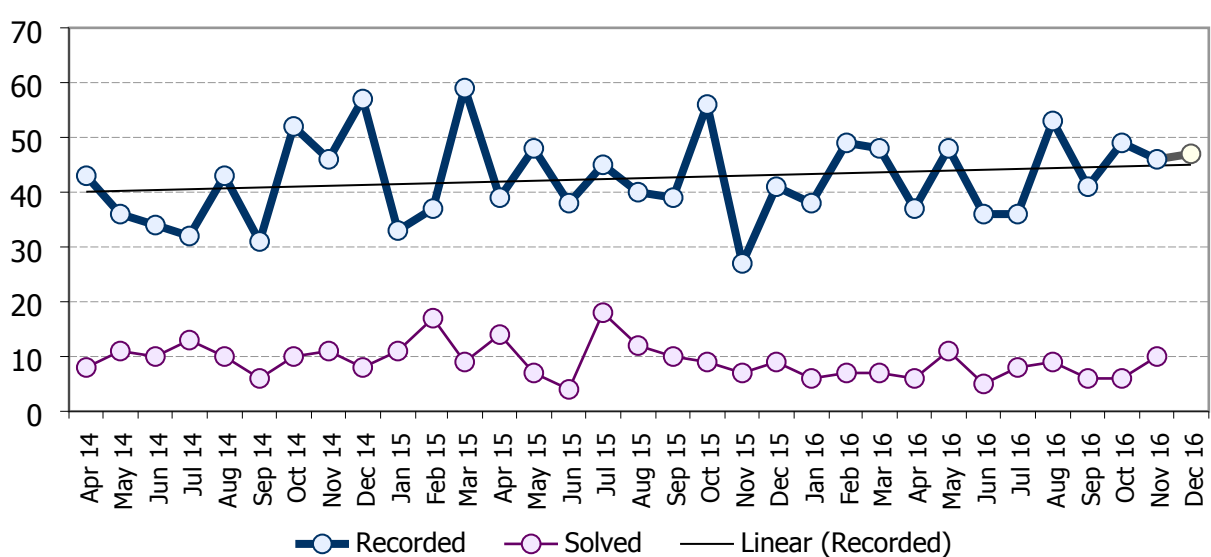
April 2014 to November 2016



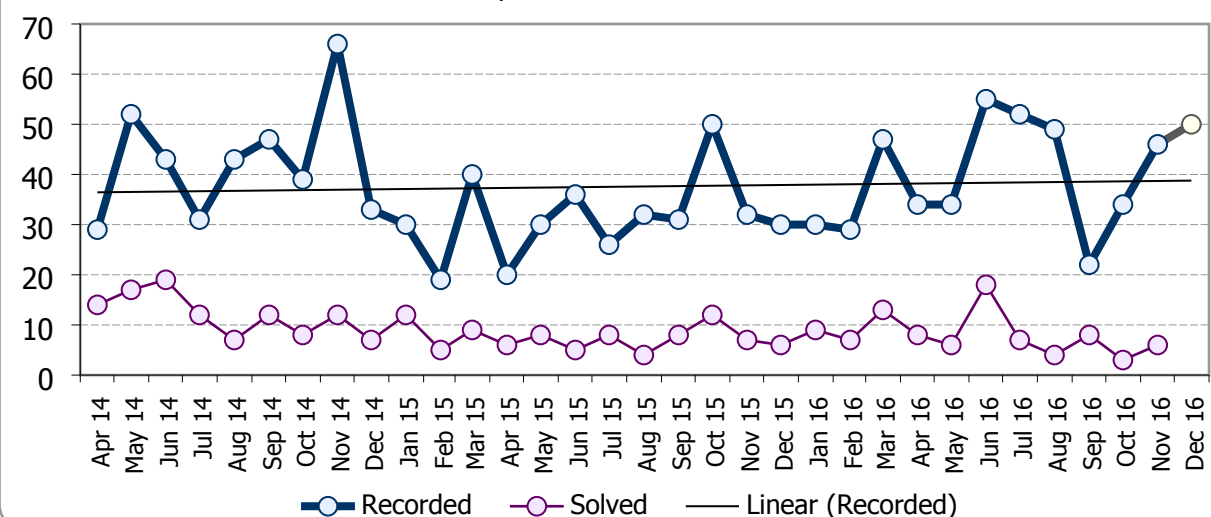
Criminal Damage and Arson - Chester-le-Street Sector April 2014 to November 2016



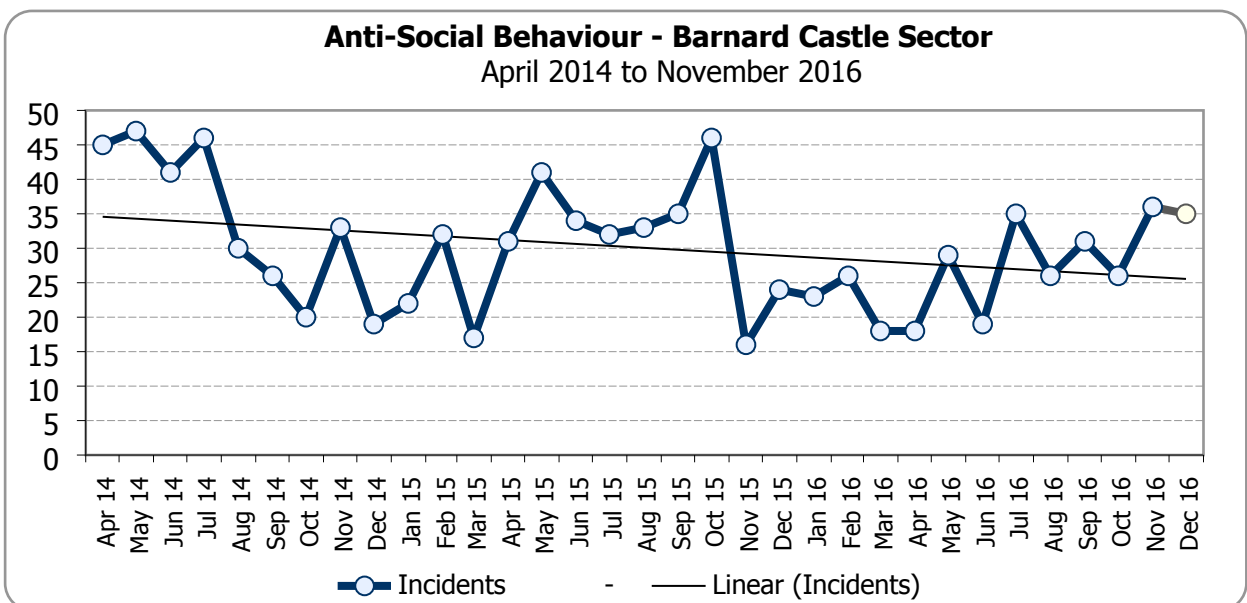
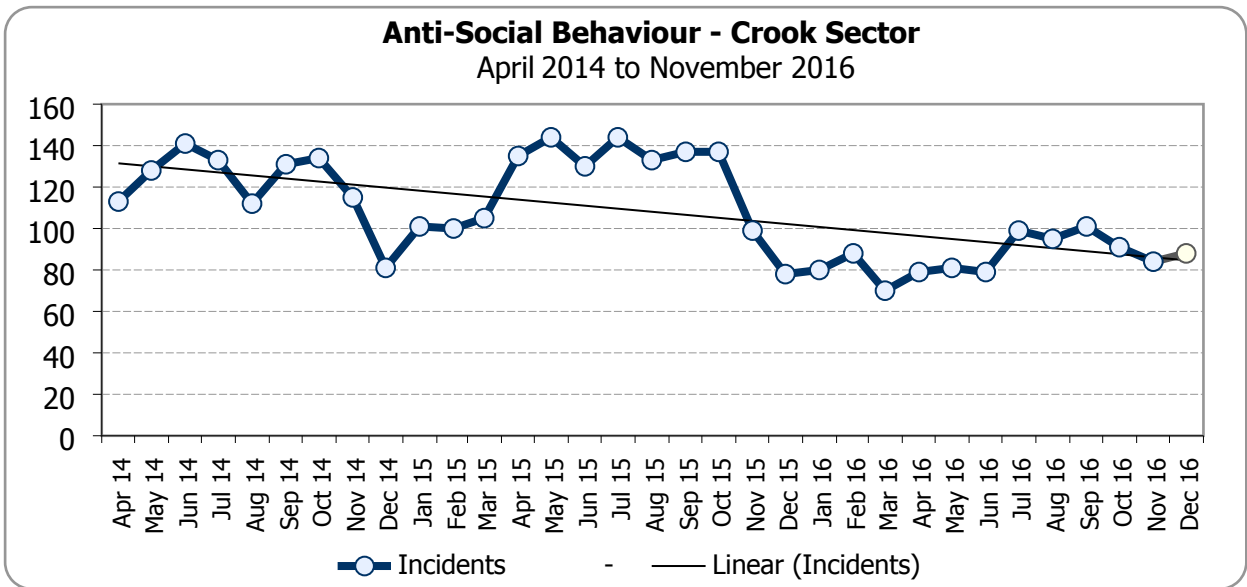
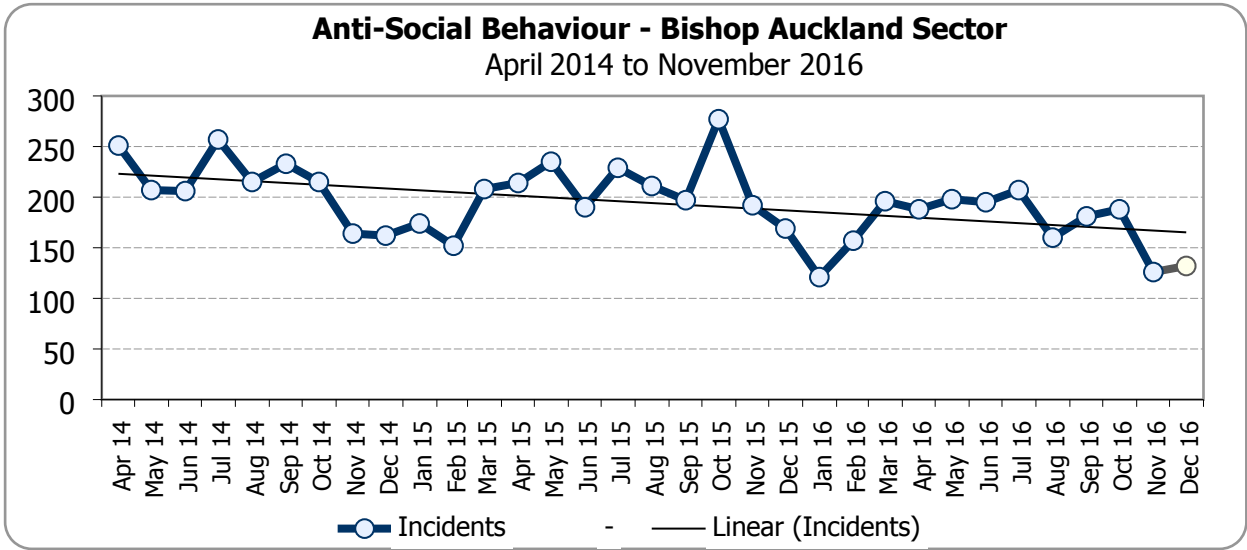
Criminal Damage and Arson - Stanley Sector April 2014 to November 2016



Criminal Damage and Arson - Consett Sector April 2014 to November 2016

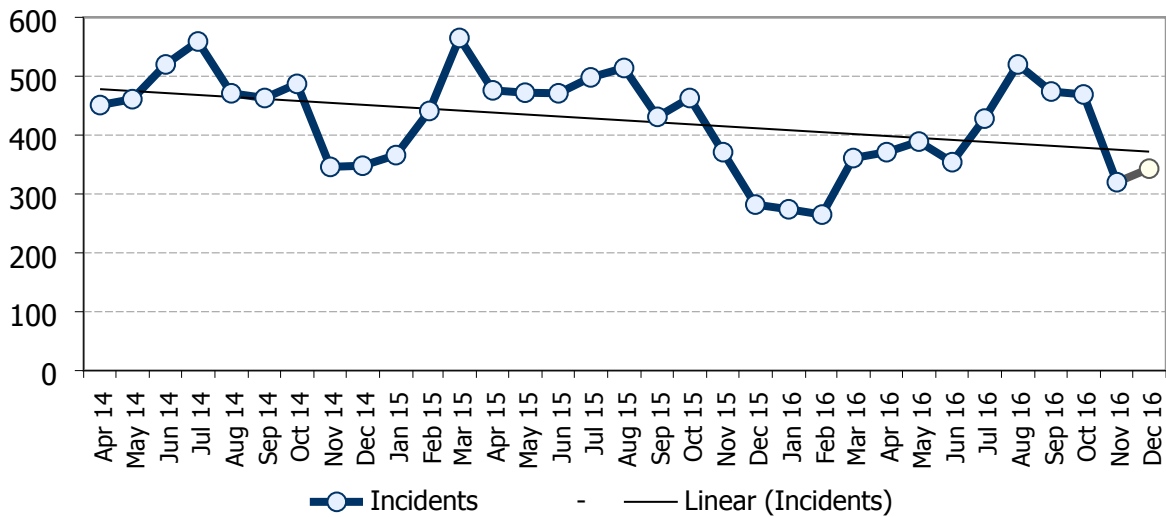


Anti-Social Behaviour



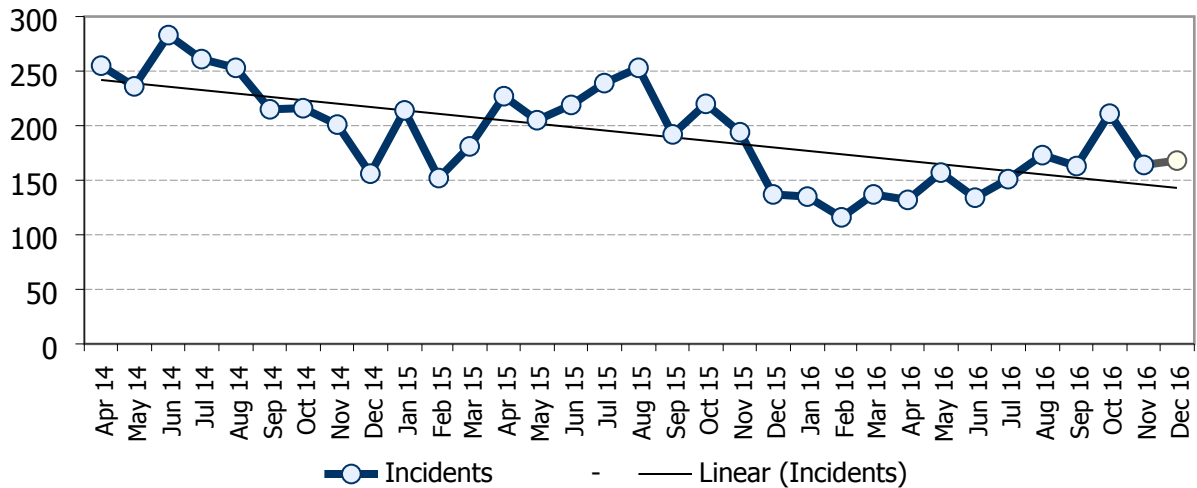
Anti-Social Behaviour - Darlington Sector

April 2014 to November 2016



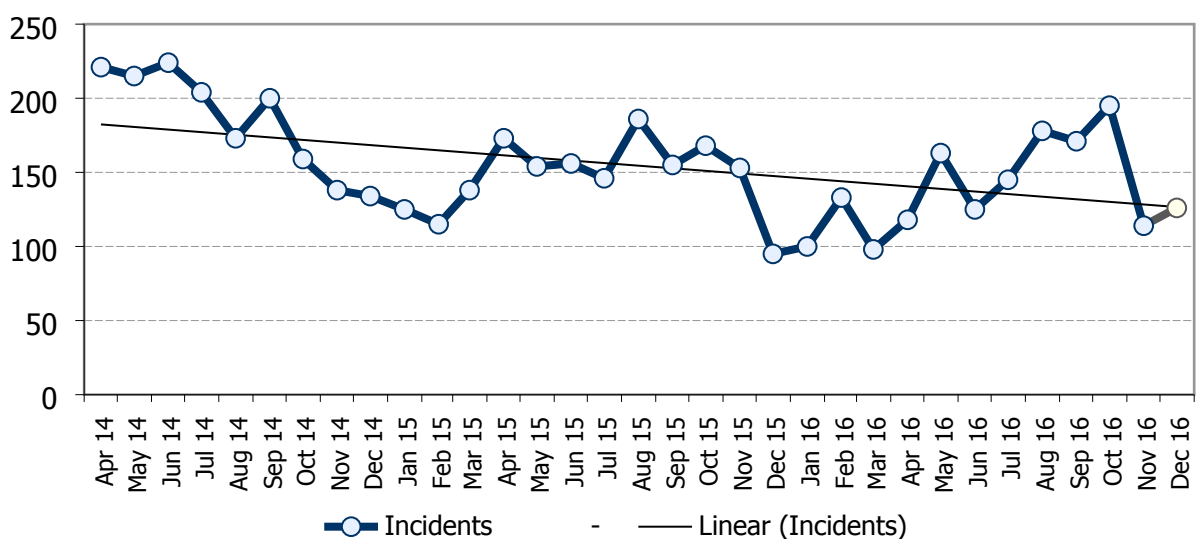
Anti-Social Behaviour - Newton Aycliffe Sector

April 2014 to November 2016



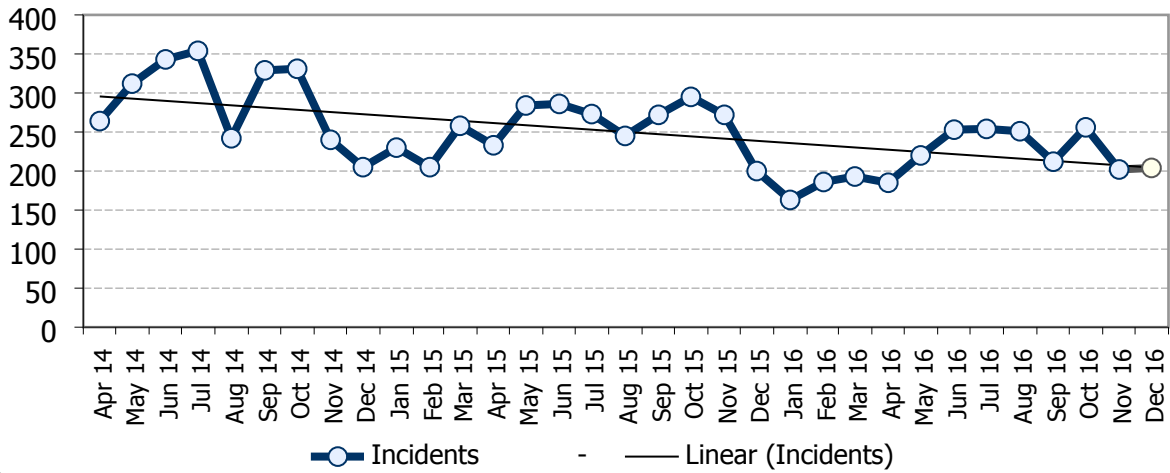
Anti-Social Behaviour - Spennymoor Sector

April 2014 to November 2016



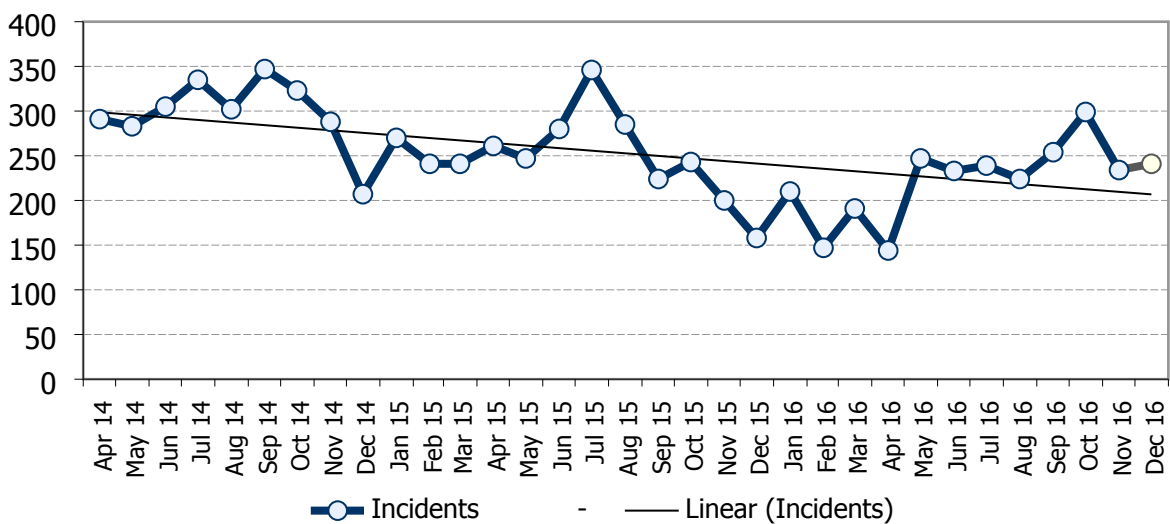
Anti-Social Behaviour - Durham Sector

April 2014 to November 2016



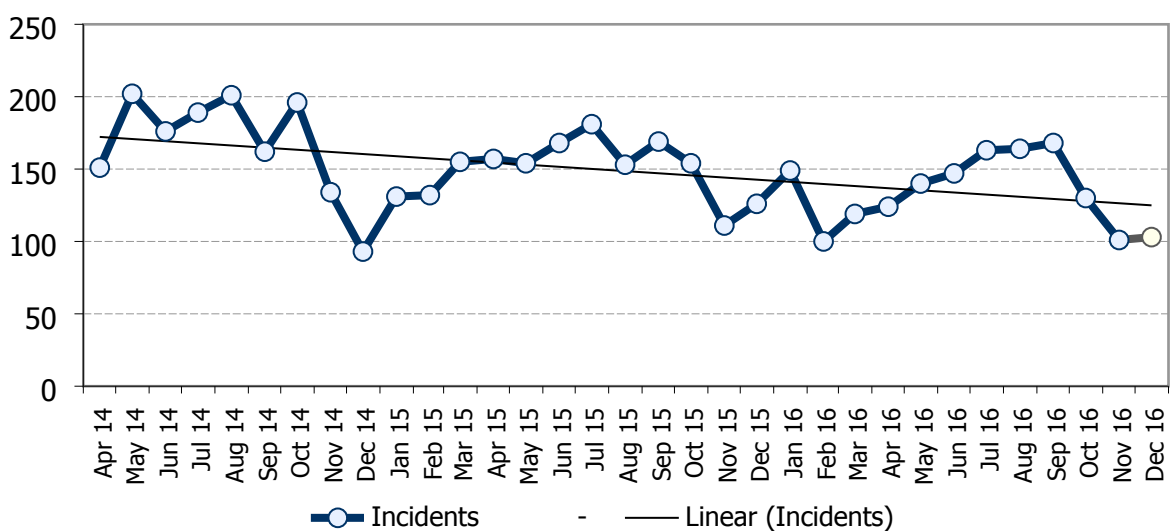
Anti-Social Behaviour - Peterlee Sector

April 2014 to November 2016

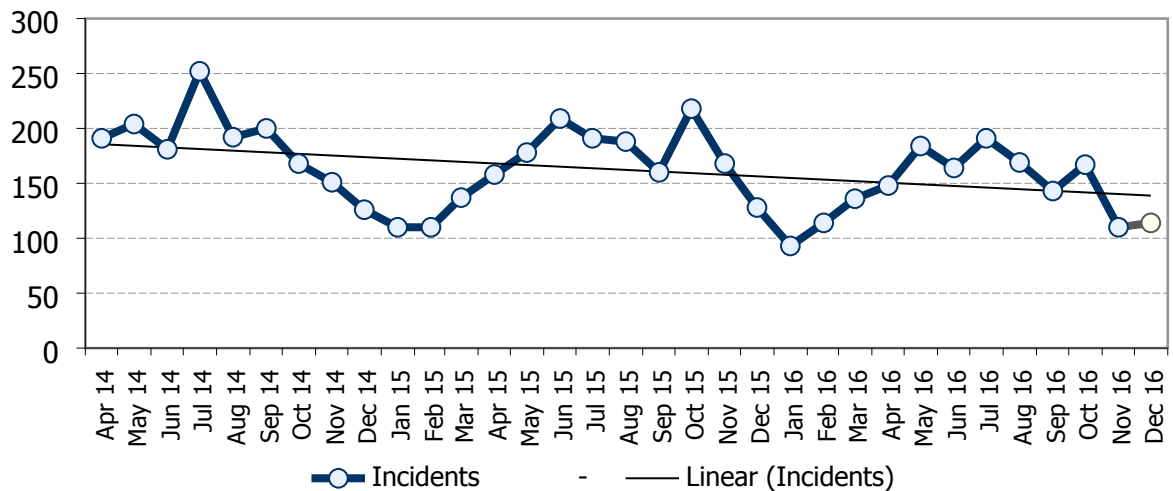


Anti-Social Behaviour - Seaham Sector

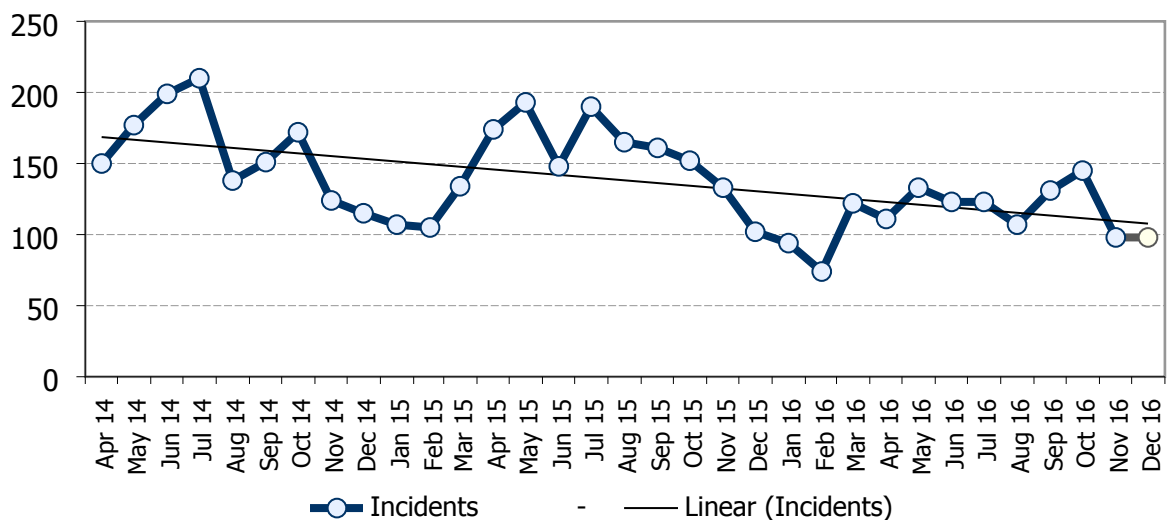
April 2014 to November 2016



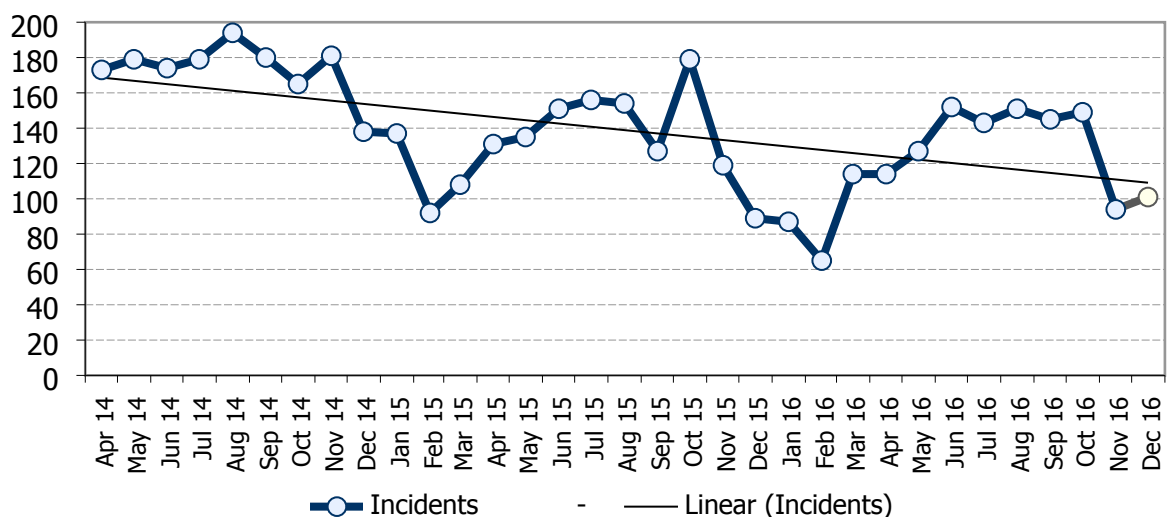
Anti-Social Behaviour - Chester-le-Street Sector
April 2014 to November 2016



Anti-Social Behaviour - Stanley Sector
April 2014 to November 2016



Anti-Social Behaviour - Consett Sector
April 2014 to November 2016



North East Comparisons – percentage change year ending June 2015 and June 2016 (from CSEW)

Area Name	All Crime (excluding fraud)	Violence against the person	Sexual offences	Theft	Burglary	Vehicle offences	Shoplifting	All other theft offences	Criminal damage and arson	Possession of weapons	Public order offences
ENGLAND	8	24	14	0	-2	4	3	-2	5	17	29
North East	24	61	26	10	7	8	10	16	16	15	84
Cleveland	11	31	36	7	5	11	11	7	5	2	-6
Durham	19	62	15	3	15	1	1	-4	10	-9	53
Northumbria	35	80	27	14	4	10	13	29	25	28	159